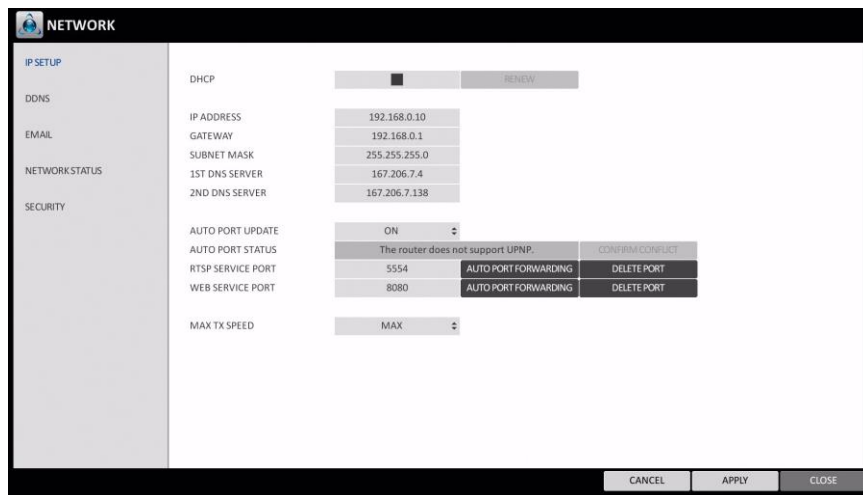


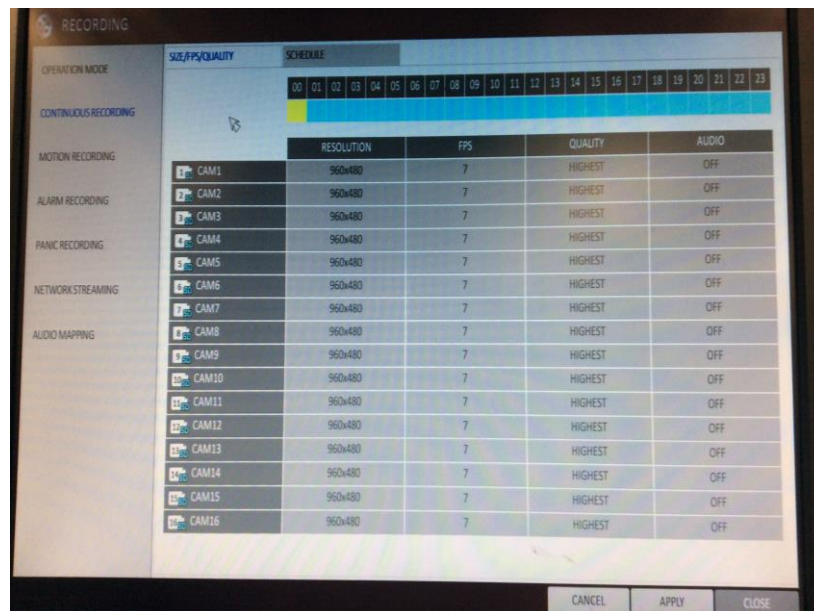
CORTROL FX Series DVR Setup

Ver. 1.0.0

1. In order to connect a Ganz Digimaster FX Series DVR to CORTROL, create a new device for each of the analog channels. If you have an 8 channel FX Series DVR, you will need to create 8 device entries.
2. Place the FX Series DVR on to the same network as the IP Cameras are on.
3. Configured the FX Series DVR network information.
 - a. Enter all IP information (Should match IP range of CORTROL Server)
 - b. Confirm Web Port: Default is 8080
 - c. Confirm RTSP port: Default is 5554



4. Configure the recording parameters of the FX Series DVR, such as the FPS, and Quality.



5. CORTROL

- a. Sign into CORTROL Management Console
- b. Select “Devices” found on the left side panel.
- c. Select “New device” from the row of buttons across the top.
 - i. Select Details:
 1. Enter title: FX DVR Chx (*Where x is the channel number being added*)
 - a. Note: the title should reflect the channel, example: FX DVR CH1.
 2. Model: Select “(General) RTSP Compatible” for the model.
 - ii. Select Network:
 1. Host: Enter FX Series DVR IP address
 2. Port: HTTP / Web port of FX Series DVR
 3. Username: “Default is ADMIN”
 4. New password: “Default is 1234”
 5. Click on “Ok”

The screenshot shows a window titled "Device DR-8FX Ch1*" with a "Details" tab selected. The "Title" field contains "DR-8FX Ch1". The "Model" dropdown menu is set to "(Generic) RTSP Compatible" and has a "Change..." button next to it. At the bottom of the window are "OK" and "Cancel" buttons.

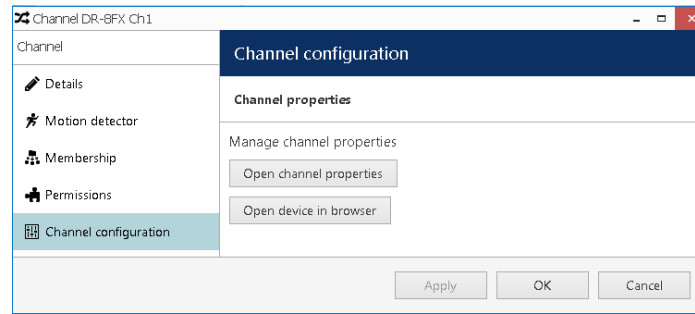
Note: If the default user name and or password do not match, update accordingly.

The screenshot shows a window titled "Device DR-8FX Ch1*" with a "Network" tab selected. The "Host" field contains "192.168.137.90". The "Port" field contains "8080". The "Username" field contains "ADMIN". The "New password" checkbox is checked, and the password field contains "••••". At the bottom of the window are "Open device in browser", "Ping device", "OK", and "Cancel" buttons.

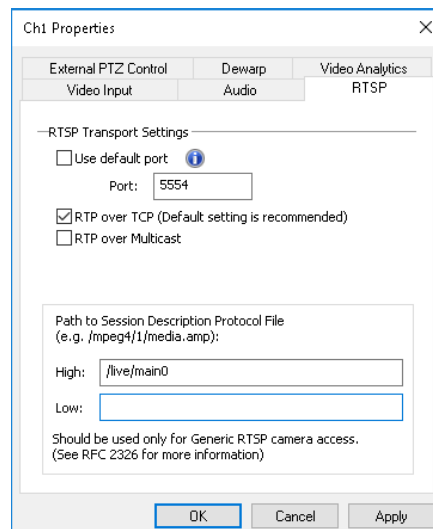
CORTROL FX Series DVR Setup

Ver. 1.0.0

- d. Repeat the above “New device” entry for each of the analog channels of the DVR.
- e. Next, lets add the RTSP string as required.
- f. From the Management Console options, select Channels from the left panel.
 - i. Select the first channels labeled FX DVR Chx (*Where x indicates the video channel*)
 - ii. Select “Edit” from the row of buttons across the top.
 - iii. Select “Channel configuration” from the left panel options.



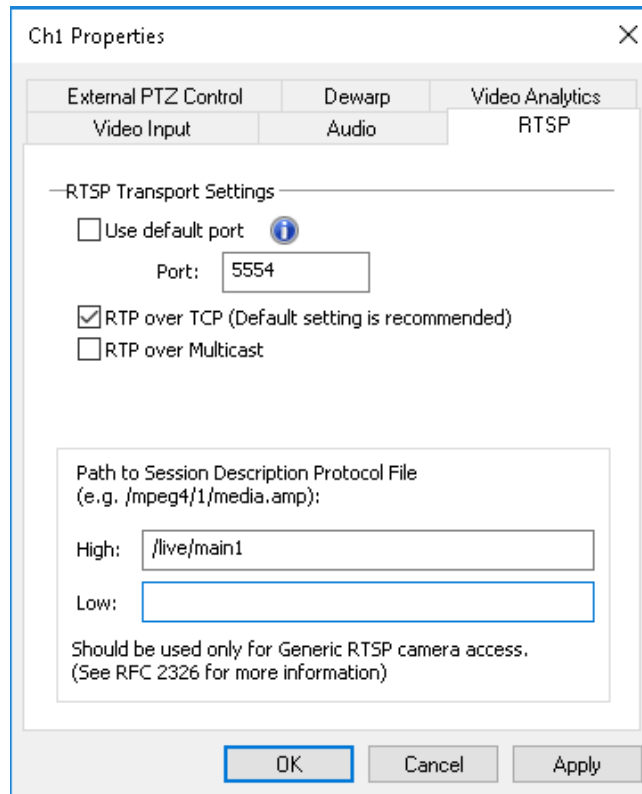
- iv. Select open channel properties.
- v. Select the RTSP tab
 1. Uncheck “User default port”
 - a. Enter 5554, unless DVR is programmed otherwise
 2. Enter the following string into High for Main stream;
 - a. /live/main0
 3. Enter the following string into Low for secondary stream;
 - a. Leave blank, since the FX Series DVR does not offer a secondary stream.
 4. Select ok, to return to Channel Configuration window
 5. Click cancel to close window.



CORTROL FX Series DVR Setup

Ver. 1.0.0


- g. Repeat above steps for each RTSP channel that was added.
 - i. When entering the string for each addition RTSP channel, be sure to change the “main0” part to reflect the next channel number.
 - 1. Example for Ch2: /live/main1



Ch1 Properties

External PTZ Control Dewarp Video Analytics
Video Input Audio RTSP

—RTSP Transport Settings—

Use default port 

Port:

RTP over TCP (Default setting is recommended)

RTP over Multicast

Path to Session Description Protocol File
(e.g. /mpeg4/1/media.amp):

High:

Low:

Should be used only for Generic RTSP camera access.
(See RFC 2326 for more information)

OK Cancel Apply